

TOTAL CALIBRATION AND LABORATORY MANAGEMENT

Multimeter Calibration - As Found - Procedure PROC6

Test 2 : 200mV Range
SELECT 200mV D.C. RANGE
Enter value displayed on meter (without units)

TEST PASSED

No.	Test Title	Test Value	Reading	% Spec
1	DC Voltage Ranges			
2	200mV Range	190.0mV	189.9mV	17
3	2V Range			
4	20V Range			
5	200V Range			
6	1000V Range			
7	----- Blank Line -----			
8	AC Voltage Ranges @ 200Hz			
9	1000V Range			
10	200V Range			

Manual Input > 189.9 < Manual Input

FAIL (LOW) 580uV | 190.0mV | 580uV

Test Value 190.0mV Noise / Flicker 50.0uV Uncertainty 220uV 17% of Spec.

Buttons: Fault, Cal Help, Uncerts, Restart Test, Next >>



**SOFTWARE SOLUTIONS
FOR LABORATORIES &
SERVICE CENTRES**

TRANSMILLE
SOLUTIONS IN CALIBRATION

PROCAL CALIBRATION SOFTWARE PROVIDES A COMPLETE SET OF TOOLS TO EFFICIENTLY CALIBRATE A WIDE RANGE OF TEST EQUIPMENT.

ADVANCED FUNCTIONALITY INCLUDING MANAGEMENT OF TRACEABLE INSTRUMENTS AND UNCERTAINTY SCHEDULES IS ALSO INTEGRATED INTO THE SOFTWARE FOR THE COMPLETE SOLUTION.



PROCAL PROVIDES THE ABILITY TO CALIBRATE ANY TYPE OF INSTRUMENT USING ANY TYPE OF UNIT FOR THE ULTIMATE IN FLEXIBILITY

OVERVIEW

CORE FUNCTIONALITY



CALIBRATE ANY TYPE OF INSTRUMENT



CUSTOM CERTIFICATES & REPORTS



INTUITIVE GRAPHICAL CALIBRATION



TRACEABLE INSTRUMENT MANAGEMENT



COMPLETE UNCERTAINTIES MANAGEMENT



ADVANCED INSTRUMENT CONTROL



BUILT-IN PROCEDURE WIZARDS



BARCODE SCANNER & LABEL PRINTER SUPPORT

PROCAL-TRACK PROVIDES FUNCTIONS TO HANDLE ALL ASPECTS OF INSTRUMENT MANAGEMENT, FROM GOODS INWARDS, JOB SCHEDULING, POST CALIBRATION PAPERWORK AND GOODS DESPATCH.

BASED AROUND THE CONCEPT OF A 'VIRTUAL JOB SHEET' PROVIDING DETAILED RECORD OF INSTRUMENT HISTORY WHILST PRESENTING A FAMILIAR LOOK FOR USERS, MINIMISING TRAINING REQUIREMENTS.

DEDICATED FUNCTIONS INCLUDING CALIBRATION REMINDERS, SUB CONTRACTED JOB HANDLING AND TRACEABLE INSTRUMENT MAINTENANCE ARE ALSO PROVIDED.

CALIBRATION PRICING DATABASE BUILT-IN - PRICES CAN BE SET UP AND RECORDED WITH EACH JOB PERFORMED (PRICE LINK TO PROCEDURES).

OVERVIEW

CORE FUNCTIONALITY



MANAGEMENT FROM GOODS-IN TO DESPATCH



VIRTUAL JOB SHEET WITH FULL HISTORY



COMPREHENSIVE REPORTS & INTEGRATION



CALIBRATION REMINDER FUNCTION



STOCK DATABASE FUNCTIONS



FULL INVENTORY & CONTACTS MANAGEMENT



BARCODE SCANNER & LABEL PRINTER SUPPORT

- A COMPLETE SYSTEM - READY TO USE 'OUT OF THE BOX' WITH MULTIPLE EXAMPLES, TEMPLATES PLUS DRIVERS FOR POPULAR CALIBRATORS AND METERS
- SUPPLIED WITH A LIBRARY OF PROCEDURES, PLUS A BUILT IN WIZARD TO CREATE NEW PROCEDURES IN MINUTES
- DE-SKILL CALIBRATION PROCESSES USING IMAGES, DIAGRAMS & VIDEO PROMPTS
- MEASUREMENT & INSTRUMENT DATA STORED DIRECT TO DATABASE
- NETWORK TOGETHER MULTIPLE COMPUTERS TO SHARE DATA
- PRODUCE PROFESSIONAL CERTIFICATES WITH COMPANY LOGO
- DYMO LABEL PRINTER SUPPORT FOR CALIBRATION LABELS
- SUPPORTS QUALITY SYSTEMS INCLUDING ISO900 / ISO17025
- CREATE UNCERTAINTY BUDGETS AND FULL CAPABILITY SCHEDULE WITH SUPPORTING TEMPLATES AND REPORTS
- ADVANCED INSTRUMENT CONTROL VIA RS232/USB/GPIB & LAN
- CRYSTAL REPORTS INTEGRATION WITH DEFAULT TEMPLATES FOR TEST REPORTS, CERTIFICATES, WORK SHEETS AND MORE
- MULTI-LANGUAGE SUPPORT

KEY BENEFITS

- 'VIRTUAL JOB SHEET' WITH COMPREHENSIVE INSTRUMENT RECORD INCLUDING HISTORICAL DATA
- COMPLETE GOODS INWARDS MANAGEMENT WITH BARCODE SCANNER SUPPORT AND ACCESSORIES TRACKING
- DESIGN BASED ON WORKING LABORATORY PRACTICES, WITH FUNCTIONS SUCH AS 'FAST TURN' AND MAINS SAFETY TEST BUILT INTO GOODS IN PROCESSES.
- CALIBRATION REMINDER FUNCTION WITH OPTIONAL PRICING
- TRACEABLE INSTRUMENT MANAGEMENT TO ASSIST IN MAINTENANCE OF IN-HOUSE LABORATORY EQUIPMENT
- CALIBRATION DATABASE FOR CALIBRATION, REPAIR, LABOUR AND PARTS PRICES
- CRYSTAL REPORTS INTEGRATION WITH TEMPLATES FOR A WIDE RANGE OF USES INCLUDING CUSTOMER FAULT REPORTS AND REPAIR ESTIMATES
- INSTRUMENT RENTAL MANAGEMENT (WITH DESPATCH / BOOKING IN)
- CUSTOMISABLE LABEL PRINTING FOR JOB * ACCESSORIES * SERIAL NUMBERS * MAIN SAFETY LABELS
- PDF SCANNER SUPPORT TO ALLOW EXTERNAL DOCUMENT HANDLING
- MULTI-LANGUAGE SUPPORT

KEY BENEFITS

TRANSMILLE

SOLUTIONS IN CALIBRATION

PROCAL :: THE COMPLETE CALIBRATION SOLUTION

MAKING TEST & MEASUREMENT EASIER

TECHNICAL DATA FOLDER

A DATA FOLDER DEDICATED TO THE UUT, USEFUL FOR STORING MANUFACTURER DATA INCLUDING MANUALS AND SPECIFICATIONS.

LAB PROCEDURE

LINK DIRECTLY TO THE PROCEDURE DEFINED BY LABORATORY OPERATING PROCEDURES, AIDING SUPPORT OF QUALITY AND OPERATING POLICIES

CALIBRATION PROMPT

A DEDICATED PROMPT SCREEN WITH DETAILS ON ADJUSTMENT OR SET UP. CAN INCLUDE A PHOTO, DIAGRAM OR VIDEO WITH ADDITIONAL TEXT.

TECHNICAL HELP FILE

A NOTEPAD BASED TEXT FILE PROVIDING USEFUL NOTES AND TECHNICAL DATA ON THE UNIT UNDER TEST.

CAL HELP FUNCTION AVAILABLE DURING EACH TEST

- VIEW CALIBRATION PROMPT SCREEN
- VIEW TECHNICAL HELP FILE
- VIEW LABORATORY PROCEDURE

PROCAL CALIBRATION SCREEN

Multimeter Calibration - As Found - Procedure PROC6

TEST PASSED

Test 2 : 200mV Range
SELECT 200mV D.C. RANGE
Enter value displayed on meter (without units).

No.	Test Title	Test Value	Reading	% Spec
1	DC Voltage Ranges	199.9mV	199.9mV	17
2	200mV Range			
3	2V Range			
4	20V Range			
5	200V Range			
6	1000V Range			
7	Blank Line			
8	AC Voltage Ranges @ 200Hz			
9	1000V Range			
10	200V Range			

Manual Input > 189.9

FAIL (LOW) | 580uV | 190.0mV | 580uV | FAIL (HIGH)

Uncertainty 220uV

17% of Spec

Buttons: Fault, Cal Help, Uncerts, Break Test, Test Value 190.0mV, Noise / Flicker 50.0uV, Uncertainty 220uV

Procedure Builder Wizard

Please select an instrument:

- DIGITAL MULTIMETERS
- MULTIMETER
- CONTINUITY & INSULATION
- OSCILLOSCOPE
- RCD TESTER
- PRESSURE TRANSDUCER
- PRESSURE GAUGES
- PRESSURE TRANSMITTER
- OPTICAL TACHOMETER
- TORQUE DRIVER
- SIGNAL GENERATOR

PROEDIT PROCEDURE WIZARD

TRAFFIC LIGHT SYSTEM FOR TEST STATUS.

- TEST PASSED
 - TEST MARGINAL
 - TEST FAILED
- TEST WITHIN ACCURACY LIMITS
TEST BORDERLINE ACCURACY LIMITS
TEST OUTSIDE ACCURACY LIMITS
- * ALSO INDICATES TEST PROBABLE PASS / FAIL FOR M3003 / GUM UNCERTAINTY

TEST LIST WITH KEY DATA - CLICK ON A LINE TO RETEST

- TEST TITLE
- TEST VALUE
- READING
- % OF SPECIFICATION

GRAPHICAL DISPLAY FOR ACCURACY (+/-) AND UNCERTAINTIES



STEP BY STEP SEQUENCE GUIDES USER THROUGH TESTS WITH GRAPHICAL PROMPTS

- NEXT>> TO PROCEED
- RESTART BUTTONS
- % OF SPECIFICATION
- FAULT BUTTON TO MARK FAULTY TEST

PROEDIT PROCEDURE WIZARD TO CREATE PROCEDURES QUICKLY AND ACCURATELY

- WIDE SELECTION OF INSTRUMENTS
- CREATE PROCEDURES IN MINUTES
- SETS UNCERTAINTIES AND UUT SETTING AUTOMATICALLY



PROEDIT

- PROEDIT PROCEDURE MANAGEMENT :
- SET UP UNCERTAINTY STATEMENTS PER FUNCTION
 - CREATE PROCEDURES USING WIZARD AUTOMATION
 - EDIT PROCEDURES (RUN IN PROCAL AT THE SAME TIME)
 - IMPORT / EXPORT / LOAD PROCEDURES FROM THE WEB



PROCAL

- PROCAL CALIBRATION SOFTWARE :
- ADVISE OF TRACEABILITY EVENTS (RECAL / EXPIRY)
 - RUN PROCEDURES CREATED BY PROEDIT
 - CONTROL OF A WIDE RANGE OF INSTRUMENTATION
 - COMPLETE M3003 / GUM UNCERTAINTY CALCULATION
 - DATA STORAGE TO DATABASE (NETWORK READY)



PROCRET

- STAND ALONE CERTIFICATE PRINTING FOR PROCAL :
- PROVIDE OFFICE BASED CERTIFICATE PRINTING
 - ENSURES ENGINEERS FOCUS ON CALIBRATION WORK
 - SUPPORTS DYMO PRINTER FOR CALIBRATION LABELS
 - BUILT IN / CRYSTAL REPORTS BASED CERTIFICATES



PROSET

- THE CONFIGURATION PROGRAM FOR PROCAL :
- INSTRUMENT TRACEABILITY & UNCERTAINTIES SET UP
 - LABORATORY UNCERTAINTIES, SIGNATORIES & DATA
 - USER ACCESS / PREFERENCES / SOFTWARE SETTINGS
 - LABEL PRINTER, CERTIFICATE LOGOS AND MORE

PROCAL-TRACK :: THE COMPLETE MANAGEMENT SOLUTION

JOB CONTROL FROM GOODS-IN TO DISPATCH



PRINT MENU :: COMPREHENSIVE DOCUMENTATION AND LABELS

- JOB SHEET**
COMPLETE DETAILS FOR THE CURRENT JOB INCLUDING FULL CUSTOMER DETAILS, SERVICE REQUIRED AND TURN AROUND TIME
- PACKING ID SHEET**
AN IDENTIFICATION SHEET DESIGNED TO BE ATTACHED TO CUSTOMERS SPECIFIC PACKAGING.
- JOB LABELS**
AS AN ALTERNATIVE TO JOB SHEETS AND COMPACT JOB LABEL CAN BE ATTACHED TO INSTRUMENTS
- ID LABELS**
A SYSTEM ID LABEL WITH BARCODES CAN BE USED FOR TRACKING INSTRUMENTS.
- ACCESSORY LABELS**
COMPLETE ACCESSORY TRACKING USING BARCODED LABELS ENSURES ALL ACCESSORIES ARE RETURNED.
- MAINS SAFETY LABELS**
TO SUPPORT MAINS SAFETY TESTING A DEDICATED LABEL CAN BE PRINTED DURING BOOKING IN
- JOB COMPLETION FORM**
A SUMMARY OF SERVICE PERFORMED INCLUDING LABOUR, REPAIR COSTS AND PARTS USED.
- SERVICE LOG**
A COMPLETE HISTORY OF THE INSTRUMENTS CALIBRATION & SERVICE - IDEAL FOR QUALITY SYSTEM RECORDS.
- CERTIFICATE & LABEL**
PRINT THE LATEST CALIBRATION/TEST CERTIFICATES AND LABELS FOR INSTRUMENTS, WITH ACCESS TO HISTORICAL DATA FOR RE-PRINTS
- SERIAL NUMBER LABELS**
TO SUPPORT INSTRUMENT MANUFACTURE, UNIQUE SERIAL NUMBER LABELS CAN BE PRINTED.
- CUSTOM REPORTS**
LINK UP TO 100 REPORTS CREATED USING CRISTAL REPORTS
• CERTIFICATES • FAULT/ESTIMATE REPORTS
• MANAGEMENT REPORTS • HIRE REPORTS

DETAILED JOB INFORMATION WITH DEDICATED SCANNED DOCUMENT FUNCTIONS TO LINK TO EXTERNAL CERTIFICATES AND CUSTOMER PAPERWORK

DIGITAL PHOTO DISPLAY BASED ON MODEL NUMBER

TRACEABLE INSTRUMENT DATA - IDEAL FOR USE RECORDING IN-HOUSE LABORATORY EQUIPMENT INFORMATION.

ADVANCED EDIT FUNCTION PROVIDES PASSWORD PROTECTED ACCESS TO ADDITIONAL DATA STORED FOR EACH INSTRUMENT.

EDITABLE DROP DOWN LISTS FOR A WIDE RANGE OF INFORMATION. EDIT USING WINDOWS NOTEPAD BY SIMPLY CLICKING THE '...' BUTTON

Full job control is available within ProCal-Track, from goods inwards, job processing (including sub-contract calibration/repair) to instruments despatch to customers. Multiple address support. Full Bar code integration for booking-in to instrument



ProCal-Track can record services performed and parts used. A stock database is used to store calibration, repair and parts prices for easy selection.



Complete accessories management - record all accessories received with a customers instrument. Issue bar coded tracking label with optional enforced scanning of accessories prior to despatch.





CALIBRATE ANY TYPE OF INSTRUMENT

A complete set of test types allows ProCal to be easily set up to record any type of unit. As well as dedicated test functions for meters, signal sources and electricians test tools, a **GENERAL** type test offers the ability to record readings in units as diverse as dimensional, torque, force, airflow plus more.

INTUITIVE GRAPHICAL CALIBRATION

Using a graphical display linked to instrument accuracy and system uncertainties, ProCal can visually indicate test readings in relation these measurement parameters. Using this method M3003 requirements including probable pass / fail indications can be recorded. This *de-skills* the measurement process using an easy to learn set of visual indicators.



COMPLETE UNCERTAINTIES MANAGEMENT

Configuration and implementation of uncertainty calculations becomes easy using ProCal. Pre-supplied templates coupled with imported uncertainty and stability data* allows point by point uncertainties calculated to be performed automatically. Detailed breakdown of the uncertainty calculated can be viewed on-screen at any time, essential for uncertainty budget audits.

BUILT-IN PROCEDURE WIZARDS

ProCal is supplied with a large library of procedures plus a procedure wizard for automatically generating new procedures. These wizards simplify the process by allowing a specific instrument type to be selected. Once range and manufacturer data is entered the procedure wizard will create a fully formatted procedure, reducing downtime to matter of minutes when a new procedure is required.



CUSTOM CERTIFICATES AND REPORTS

As part of the 'out of the box' solution ProCal comes complete with 'built-in' certificate formats which can be customised with company logo, address and personnel details. ProCal also supports crystal reports software* to allow complete customisation of report layouts and the extension of reporting functions to cover customer fault reports, repair estimates and more - templates are supplied ready to use or customise.

TRACEABLE INSTRUMENT MANAGEMENT

A key consideration when running a calibration software system is the management of traceable equipment. ProCal comprehensively maintains this equipment, and dynamically checks and warns operators when re-calibration is nearing or expired. The software can be configured to stop calibration should an item of equipment used by the procedure have an expired calibration.



ADVANCED INSTRUMENT CONTROL

ProCal provides transparent control of a wide range of calibrators, multimeters and other reference instruments. This requires *no programming* or technical input from the user, simply setting of the desired output. To provide more advanced functionality including closed loop calibration a command language is available to remote operate equipment such as scanners, amplifiers or UUTs via **RS232/USB/GPIB/LAN**



BARCODE SCANNER & LABEL PRINTER SUPPORT

ProCal integrates with job control barcodes, such as on the label generated by ProCal-Track to allow the engineer to simply scan a job and be presented with full detailed information on the next instrument to test. ProCal has a built-in function to print certificates and calibration labels directly at the end of a calibration (or in the office using ProCert later).



MANAGEMENT FROM GOODS-IN TO DESPATCH

ProCal-Track manages the workflow from goods-inwards to despatch. Throughout this process an instrument status indicates the progression of the instrument through the calibration / repair process. ProCal-Track automatically updates the status as an instrument is handled by another process, eg. calibration complete allowing a user to check its progress.

VIRTUAL JOB SHEET WITH FULL HISTORY

All job information is presented in a familiar 'job sheet' style with multiple tabs for different aspects of the job record. Scanned documentation such as customer orders can be dynamically linked to the virtual job sheet presenting the user with a central resource for all information relating to this item of equipment, including full history.



CALIBRATION REMINDER FUNCTION

The calibration reminder function offers customisation of the number of weeks notice (default 3 weeks) to notify a customer / department. The system checks for instruments requiring calibration within this period and groups these items by customer on a report (export function also available). ProCal-Track can address letters to sub-contractors or end users depending based on address information.

STOCK DATABASE FUNCTIONS

A built-in stock database with editor allows repair, labour and parts costs to be stored. Calibration costs can be easily linked to procedures, allowing ProCal-Track (and/or ProCal) to save calibration and other service costs with the job record. This offers complete job handling with all costs recorded for use in paperwork.



COMPREHENSIVE REPORTS INTEGRATION

ProCal-Track has a range of built-in reports to provide inventory management information, workflow (including day book report) and several styles of certificates. Using Crystal Reports*, customised user reports can be added to the system. ProCal-Track comes complete with a selection of template reports including sub-contract, instrument hire and customer repair estimates & fault reports.

DOCUMENT LINKS & PDF SCANNER SUPPORT

Linking of external documents such as sub-contracted calibration certificates and customer orders is available within ProCal-Track. Support for PDF scanning of documents is provided with specific buttons to link to external certificate and customer order details. These direct links allow any user to gain access to complete job details without needing paper based copies of external documents.



FULL INVENTORY & CONTACTS MANAGEMENT WITH SEARCH

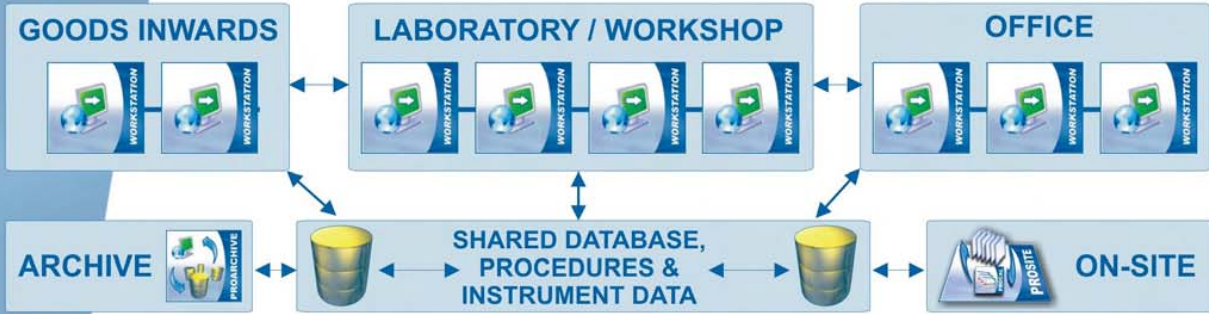
The ProCal-Track central database can be searched using the built in comprehensive search facility. This allows instrument records to be sorted, ordered and printed in various report styles. Additional reports can be created using Crystal Reports* to provide details specific to user requirements.



BARCODE SCANNER & LABEL PRINTER SUPPORT

ProCal-Track can output labels with bar codes, allowing instruments to be booked in with a simple scan. This saves time and reduced errors during the booking-in and despatch processes. In addition using bar coded accessory labels can ensure all accessories are recorded and dispatched with customer instruments. The system ID label can also be used to track instruments within the system.

TRANSMILLE SOFTWARE :: PEER-TO-PEER NETWORKING



ON-SITE DATABASE MANAGEMENT

- > MANAGES DATA EXPORT TO A PORTABLE ON-SITE DATABASE
- > IMPORTS DATA INTO PROCAL MAIN DATABASE
- > SIMPLE AND EASY TO USE INTERFACE



EASY TO USE
INTERFACE

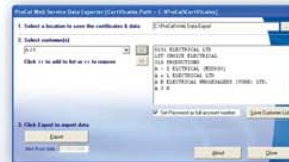


PROSITE

PROSITE

ON-LINE WEB DATA EXPORTER

- > MANAGES CERTIFICATE PDF AND WEB DATABASE EXPORT
- > PREPARES FILES READY FOR UPLOAD TO WEB SPACE



PROWEB

* REQUIRES CUSTOMISATION & INTEGRATION INTO END-USER WEBSITE.

ORDER CODES

PROCAL CALIBRATION SOFTWARE

PC-SU
PC-AU
PC-SITE

PROCAL SINGLE USER LICENCE (1st LICENCE)
PROCAL ADDITIONAL USER LICENCE
PROCAL SITE LICENCE (10 LICENCES FOR A SINGLE GEOGRAPHICAL SITE)

PROCAL-TRACK LABORATORY MANAGEMENT SOFTWARE

PC-SU
PC-AU
PC-SITE

PROCAL SINGLE USER LICENCE (1st LICENCE)
PROCAL ADDITIONAL USER LICENCE
PROCAL SITE LICENCE (10 LICENCES FOR A SINGLE GEOGRAPHICAL SITE)

PROSITE ON-SITE DATABASE MANAGEMENT SOFTWARE

PROSITE-SU
PROSITE-SL

PROSITE SINGLE USER LICENCE (1st LICENCE)
PROSITE SITE LICENCE (10 LICENCES FOR A SINGLE GEOGRAPHICAL SITE)

PROWEB WEB DATA EXPORTER SOFTWARE

PROWEB

PROWEB WEB DATA EXPORTER SOFTWARE



UNIT 4 SELECT BUSINESS CENTRE,
LODGE ROAD, STAPLEHURST, KENT.
TN12 0QW. UNITED KINGDOM.
TEL : +44 (0) 1580 890700
FAX : +44 (0) 1580 890711
EMAIL : sales@transmille.com
WWW.TRANSMILLE.COM

AGENT

ORDERING INFORMATION

Due to continuous development specifications are subject to change
Windows is a registered trademark of Microsoft Corporation
All other product names mentioned herein may be trademarks of their respective companies.